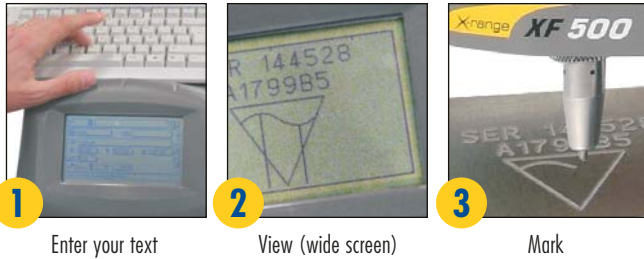


STAND-ALONE MARKING SOLUTION

X-range

XF500

A fast & innovative machine for an easy identification of all your parts.



SIMPLE

Unpack and plug your XF500: it's ready to mark!

All-in-one: keyboard included, **software integrated**, you have all the **traceability functions you need** (Text, counters, dates, serial numbers, Data Matrix™ codes, logos etc. ...).

Autonomous (no computer needed) and no consumables either: **now you're cutting costs!**

INNOVATIVE

Easily create your marking files: wide screen, icons, graphic preview...

Use your **USB drive** and import/export logos (.plt) and files.

Expandable: Benefit from the software's evolutions with easy updates (USB key) keeping your marking files.

A wide marking area, perfectly suited for your application: 100x120mm.

PERFORMING

Fast: Excellent **marking quality** up to 5 characters / second.

Flexible: Identify all your parts (small, medium or big batch volumes).

Available in 2 versions: pneumatic or electro-magnetic

Universal power supply of 90 to 230V and + than 20 languages available.

VERSATILE

Mark all your materials: metals (62 HRC max.), alloys, plastics...

all shapes and surfaces: flat, convex, machined, raw, painted etc. ...

Send data with the keyboard or receive data with the bar code reader etc. ...

Adapt it to all your needs: **Wide range of accessories** available.

RELIABLE

Micro-percussion marking: Benefit from proven 25-year **know-how** with some of the biggest names in the automotive, aeronautic, mechanical industries...

Stable and sturdy column, reliable and robust mechanics : Obtain an **accurate and consistent marking**.

Technical support in every country.



USB key — Unlimited memory storage



Marks any part shape

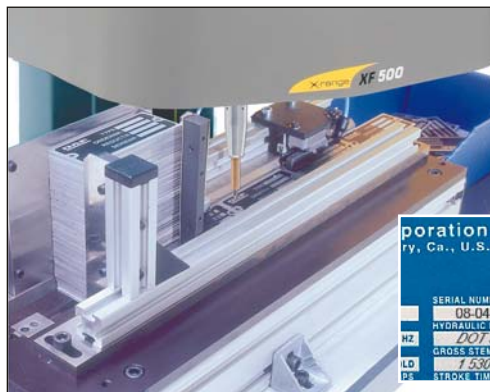


All material types

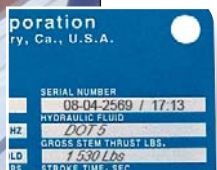
Product Highlights

- Trace all your parts
- Give value to your products
- Increase productivity
- Improve your quality process
- Prevent counterfeiting: Marks cannot be falsified





Automatic plate marking
with PFD500



Batch tracing in a
mechanics workshop



Marking DataMatrix™ codes
in aeronautics subcontracting



Recall station in
the automotive industry



MAIN ACCESSORIES

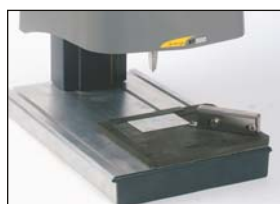


Plate holder and magnetic clamping



Lighting of the marking area



Circular Marking Device



Windows T500W Program

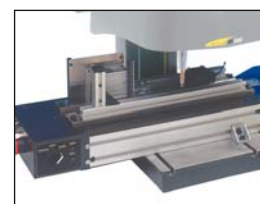


Plate feeding system

TECHNICAL SPECIFICATIONS

Characteristics:

- Available in 2 versions: Pneumatic or Electro-magnetic
- Net weight: 34Kg
- Dimensions LxHxP: 601 x 327.5 x 736mm (23.66x12.89x28.97")
- Dimensions LxHxP: 601 x 298.5 x 736mm (23.66x11.75x28.97")
- Marking area: 100 x 120mm (3.94"x4.72")
- Character size: from 0.5 to 99mm (1/100" to 3.90")
- Fixed text, variables, date and time codes, counters, DataMatrix™ codes...
- Flat, angular, radial marking etc...
- Parts up to 330mm (1.30") high
- External keyboard (supplied)

Standards complied to:

- "Machine" Directive 98/37/CE.
- "Electromagnetic compatibility" Directive 89/336/CEE.
- Low voltage Directive 73/23/CEE.

Environment and power supply:

- Power supply: 90 – 230 VAC
- Pneumatic supply (XF500p only):
5.5 bar ± 0.5 (87 psi) - non-lubricated dry air
- Power: XF500p: 120W – XF500m: 360W
- Functioning temperature: +5 to +45°C (41F to 113F)

Simply
X-tra

- Wide integrated screen (240x128 pixels) with graphic preview
- Memory capacity for over 1000 marking files!
- USB drive for quick logo and file downloads
- Multilingual and multi-keyboard



A MARK WHICH DEFIES TIME

114, quai du Rhône
F-01708 MIRIBEL Cedex
Tel +33 478 558 552
Fax +33 478 558 554
E-mail : tf@technifor.com
www.technifor.com

