



World-Class Marking Technologies

Index

- Machine Installation
- Application Installation & Availability
- Connectivity (WIFI & Password)
- First Marking
- Basic Feature
- Advance Feature
- Pro Feature
- Manual
- Help Manu
- Accessories
- Explain Depth Marking



Machine Installation



Step 1: Remove foam from front fixture



Step 2: Cut cable tie as per shown in image



Step 3: Put base of machine handle on battery as shown in image.



Step 4: Push the handle



Step 5: Installation done

Application Installation & Availability




**Contact to your
Supplier**

- Type keyword as MNSBLauncher in search box on Play Store & App Store



Connectivity (WIFI & Password)



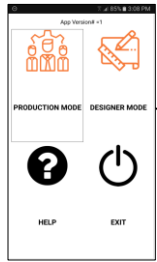
- Wi-Fi Name :- MNSBLAUNCHER Vx.x
- Wi-Fi Password :- 1234567890
- Insure Machine is ON, You can see on machine green led is ON.
- After Install application insure to give all permission to application
- You can change Wi-Fi name & Wi-Fi password. 
- You can reset Wi-Fi name & password in factory default through push button switch



First Marking

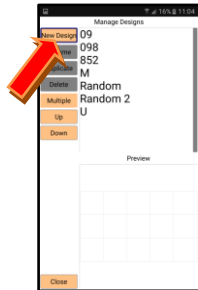
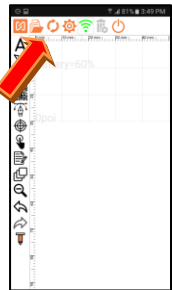



After connecting app with machine, to start marking you have to follow the below instructions.

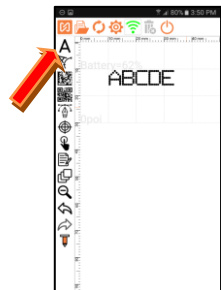



Step 1: Open MNSBLauncher and go to DESIGNER MODE.

Select Designer Mode



Step 2: Create new marking design, press  this icon to create new marking design & then press **New Design** button.



Step 3: Save & transfer Design to the machine, press  sync button to save or transfer design to the machine. Enter name of design & press **OK** button.





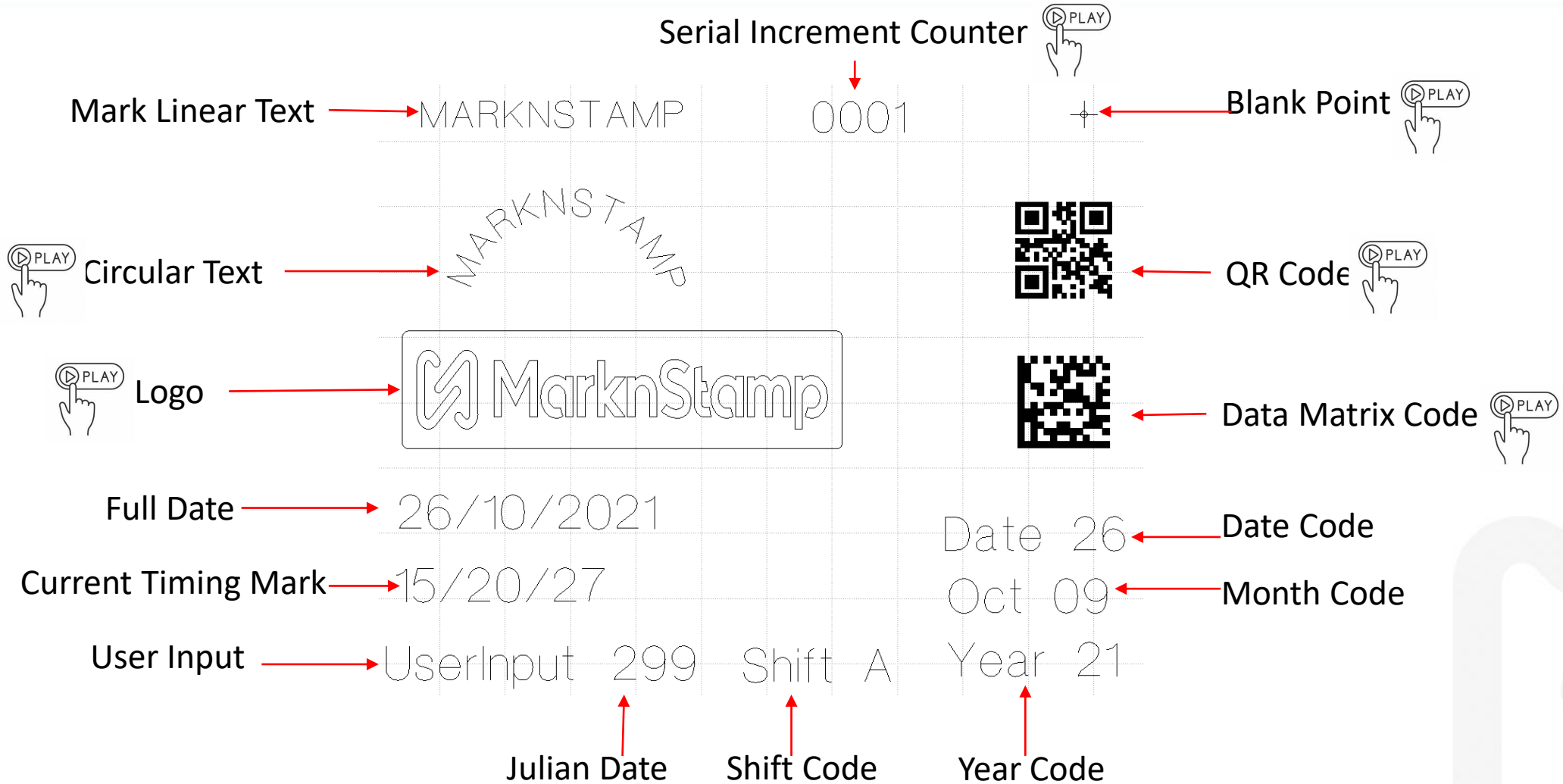
Step 4: Start marking with MNSB Machine.



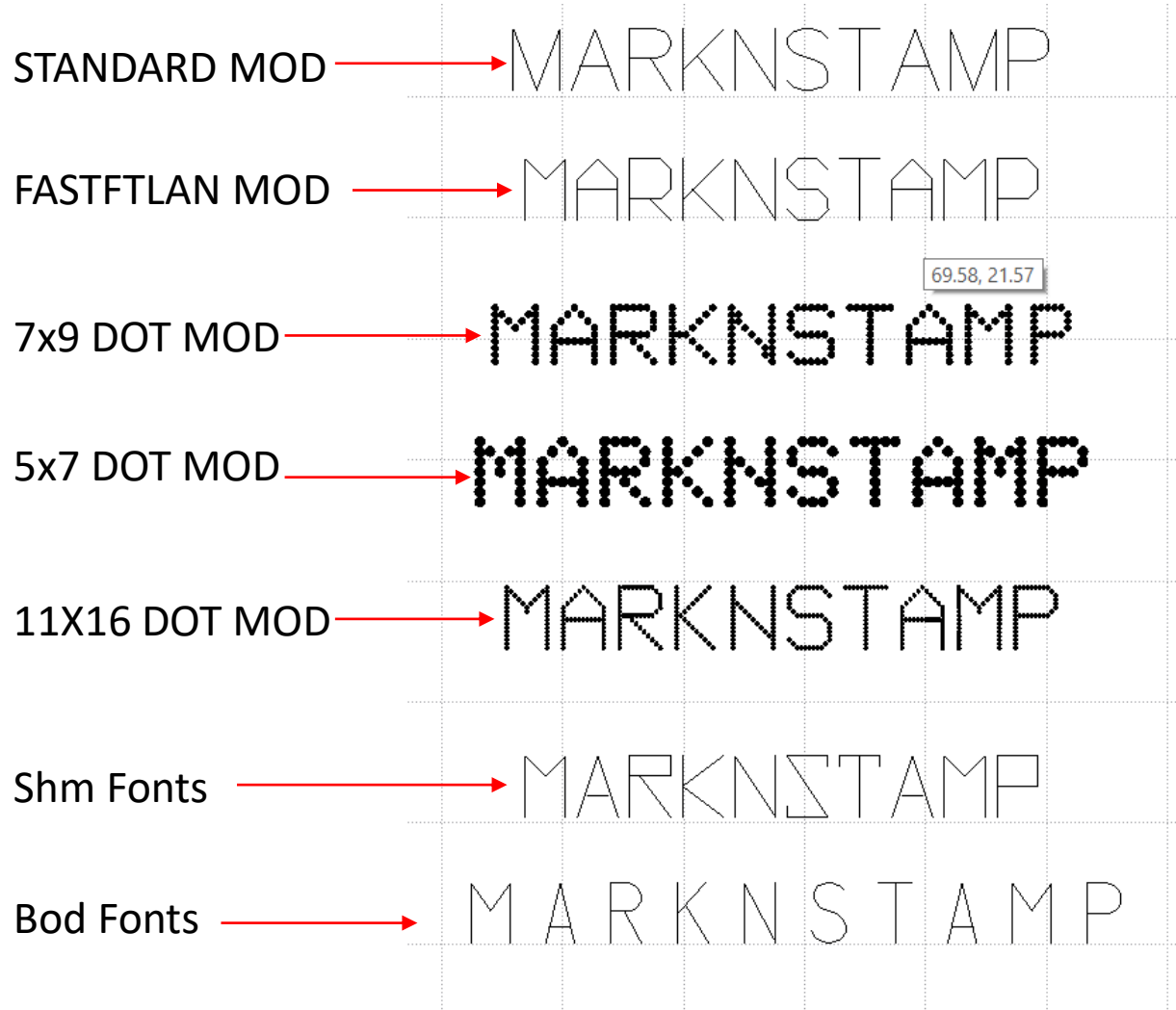
Put MNSB
Machine on
marking
component &
Press trigger to
start marking



Basic Feature



& many more feature








Barcode Scanning :- Can use camera of the smart-phone as well as external USB barcode scanner for scanning and marking of data.

Storage Capacity :- Unlimited Designs can be stored on the Smart phone or similar device

Machine Storage :- Last saved design would be stored in machine

Modes of working :- Password protected Designer mode and Production mode 

Machine Settings :- Wait at first point 
Lock Mobile with Machine 
Battery Timeout delay 
Unit to be Inches
Repeat Every Marking
Repeat each dot
Distance between dots
22 language support
Set default value

Multiple indication on Single LED.

Multiple operation on Single Push Button Switch

& many more feature



- CSV file Marking 

- UserInput (Barcode parsing Feature) 





- MNSB 53 & MNSB 155 Manual.

- Software Manual 

- Hardware Manual 

- How to Guide 

- Installation Manual 

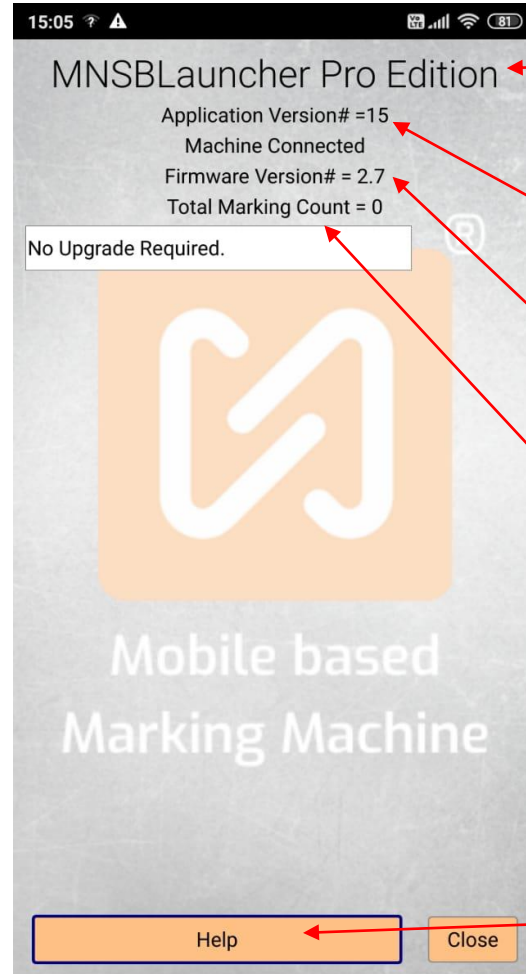
- Troubleshooting Manual 



Help Manu



Click on About Button



Pro Feature Enable

Pro Feature Disable

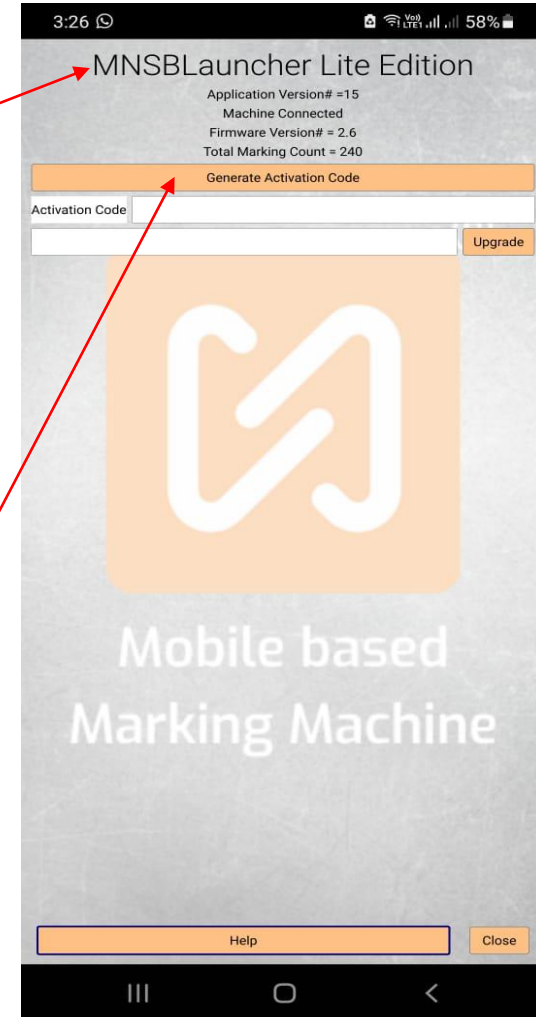
Application Version Status

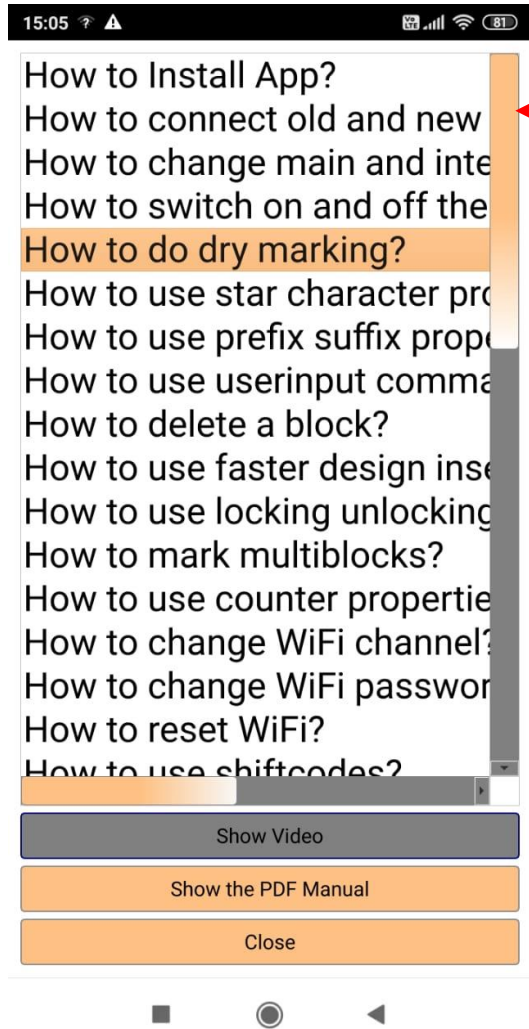
Mother Board Firmware Status

Machine Total Marking Count

Generate Activation code for Lite to Pro

Help Document PDF file & Training Video





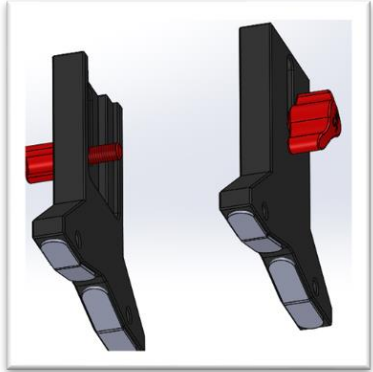
Training Videos


Insure your mobile or Laptop connect to Internet.

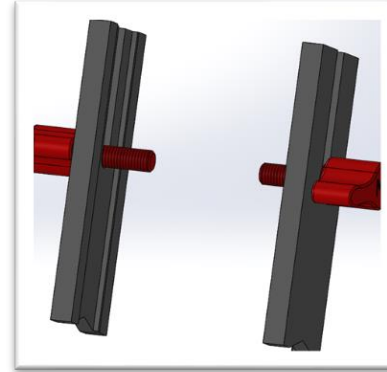




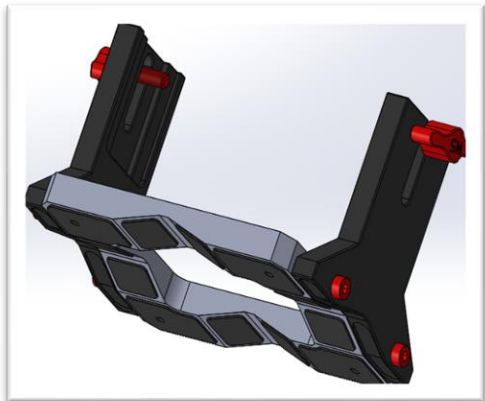
- MNSB 53 Machine Accessories




Part Number :- HD4511
Independent Resting Legs 



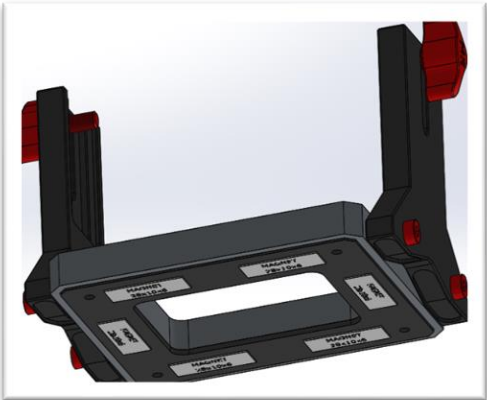
Part Number :- HD4512
"I" Shape Resting Legs



Part Number :- HD4513
Aluminium Front Fixture with V Groove 

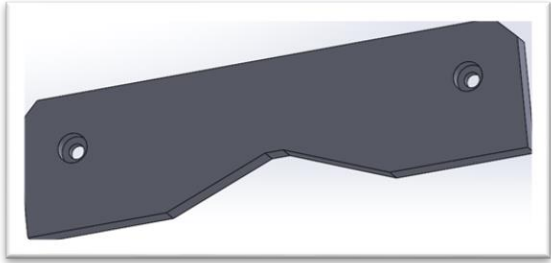


Part Number :- HD4514
Aluminium Front Fixture with V Groove & Permanent Magnets

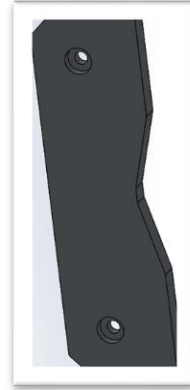


Part Number :- HD4515
Aluminium Front Fixture Flat with Permanent Magnets

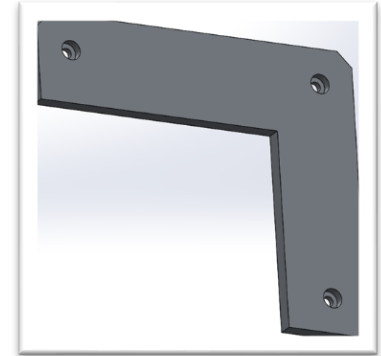




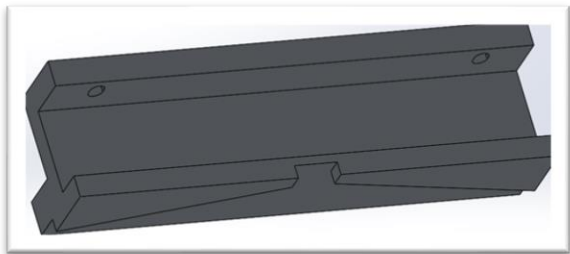
Part Number :- HD4513005
Top Resting Plate for Edge Alignment



Part Number :- HD4513006
Side Resting Plate for Side Edge Alignment



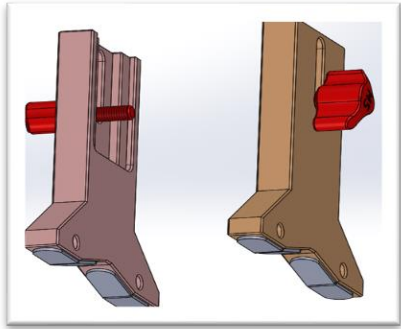
Part Number :- HD4513007
Corner Resting Plate for 2 side Alignment



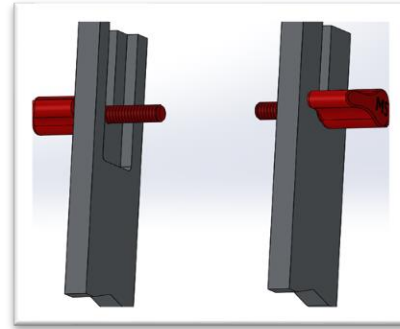
Part Number :- HD4516
Flange Marking Attachment



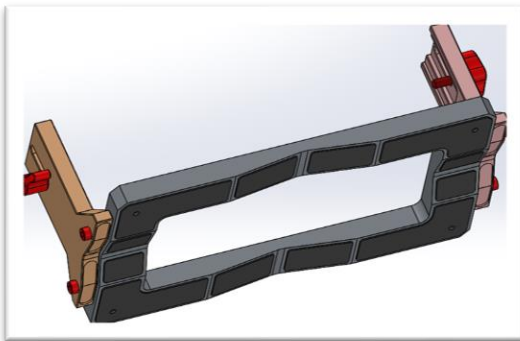
- MNSB 155 Machine Accessories



Part Number :- HD4611
Independent Resting Legs



Part Number :- HD4612
"I" Shape Resting Legs

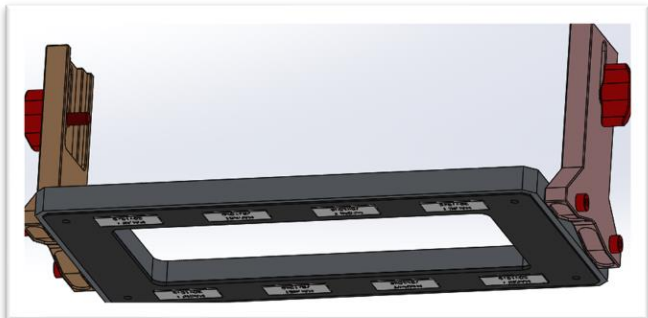


Part Number :- HD4613
Aluminium Front Fixture With V Groove



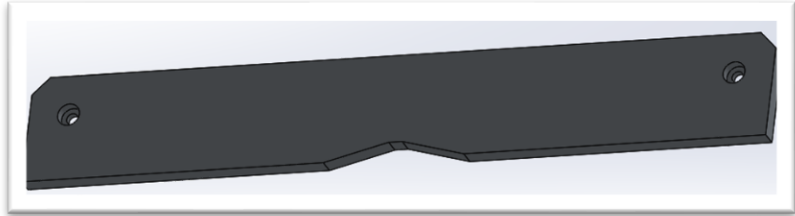


Part Number :- HD4614
Aluminium Front Fixture with V Groove & Permanent Magnets



Part Number :- HD4615
Aluminium Front Fixture Flat with Permanent Magnets





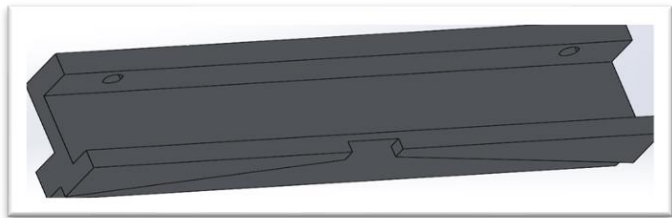
Part Number :- HD4613005
Top Resting Plate for Edge Alignment



Part Number :- HD4613006
Side Resting Plate for Side Edge Alignment



Part Number :- HD4613005
Corner Resting Plate for 2 side Alignment



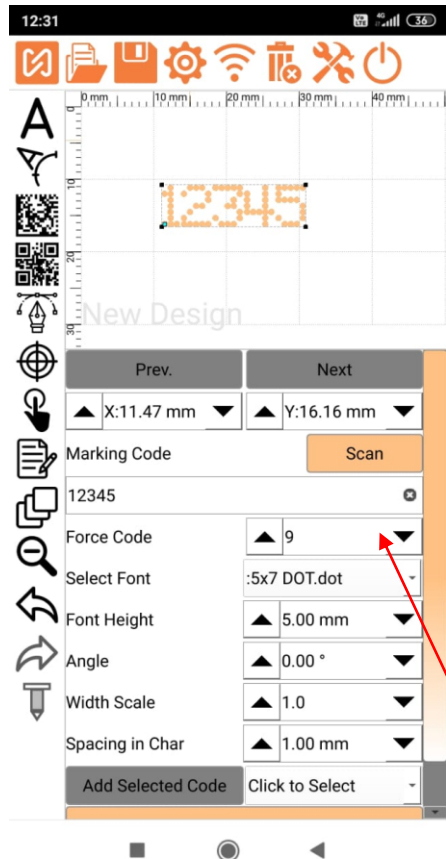
Part Number :- HD4616
Flange Marking Attachment



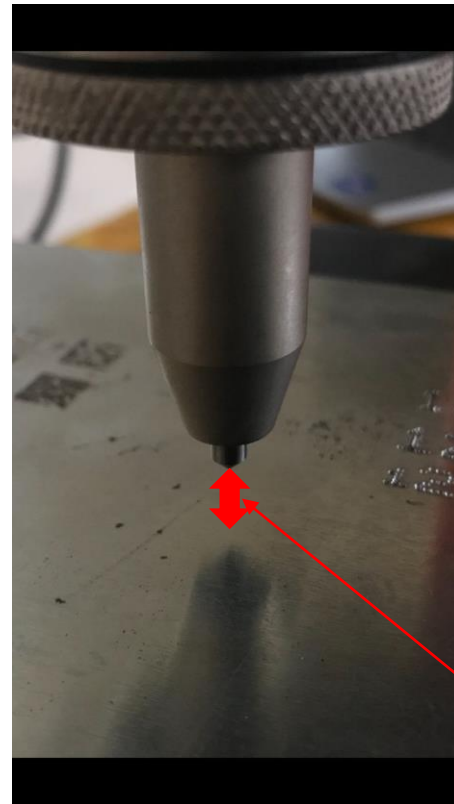
Explain Depth Marking



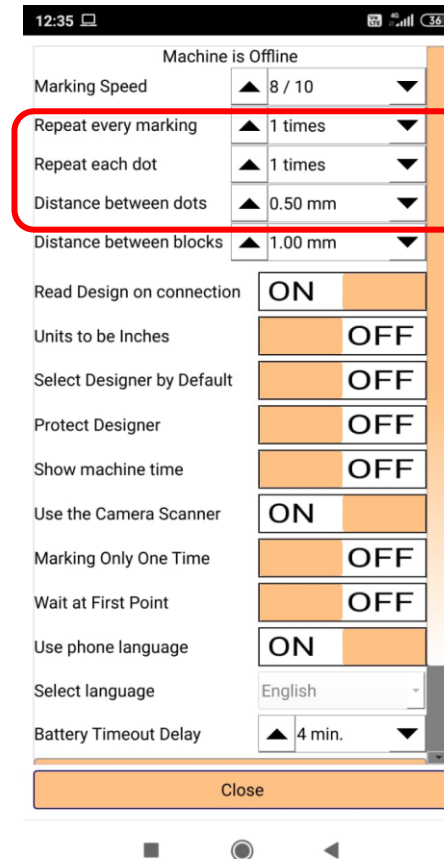
- I have suggest to choose MNSB 155 machine for deep marking because of Big stylus assembly in machine.



Set Force Code 9



Set gap 8 or 9 mm between stylus pin & marking object



Three parameter to help you to improve your deep marking. You can set this value as per your requirement



Thank You

