



COMPACT

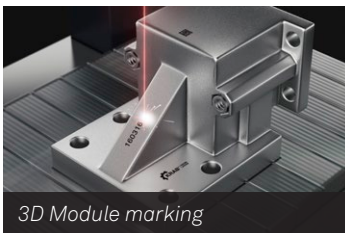


POWERFUL



INDUSTRIAL STRENGTH

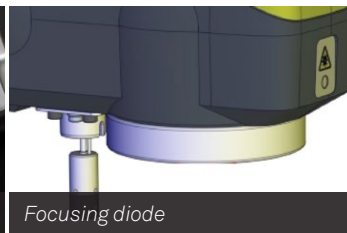
## OPTIONS



3D Module marking



Autofocus



Focusing diode



Focal lens (160mm / 254mm)

➤ Also available:

- Lasertrace™ or Laserstyle™ software
- 2 CCU / Marking head cables of 3 meters
- Extended Cord for Focusing diode
- Exhaust Adaptator Pack

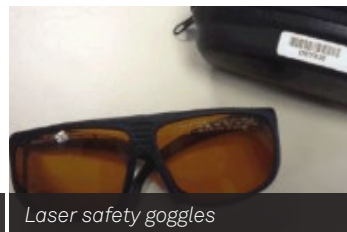
## ACCESSORIES



Rotary device



Fume extractor



Laser safety goggles



3 buttons box

➤ Also available:

- EZ FIX (used to rapidly fix small objects or items with various shapes)
- Cleaning kit for mirrors and F-theta lenses
- Caps & protections for the machines

**TECHNICAL SPECIFICATIONS**

Power	20 W
Frequency	30 kHz – 60 kHz
Operating temperature	5° - 40°C / 41° - 104°F
Storage temperature	5°C - 45°C / 41°F - 113°F
Humidity level	10 - 85 %
Rated voltage	100 - 240 V AC / 50 - 60Hz
Rated power consumption	400W (700W Max)
IP level - Head	IP54 - Dust & splashing water protected
IP level - UC	IP20
Marking Speed	10 000 mm/s
Beam diameter (F160)	40 µm
Character type - Font	Fonts optimized for traceability: +60 fonts (customised fonts on request)
Character type -Barcode	Code 39 / Code 128 / Code 93 / Code 11 / Codabar / 2 of 5 / EAN13 / EANB
Character type - 2D code	DataMatrix ECC200 / QR code / Micro QR code / UID
Character type - Logo/image	LO3 format using Logo editor Max from any format (BMP, DXF, EPS, IGES, JPEG, PNG, TIFF, etc.)
HMI (Human Machine Interface)	Integrated Backlit screen with control panel for real-time supervision, easy diagnosis, software updates, log files, memory back-up...
Interfaces	Ethernet; Profinet; 8I / 8O; Dedicated I/O (SUB D37); RS232; USB (x3)
Supported OS for Lasertrace™ Software	Windows XP, Windows Vista, Windows 7 & 8
Length optical Fibre	1.90 m
Weight - Head	8.3 kg / 18.30lb
Weight - UC	17.9 kg
Marking unit installation direction	All directions

