

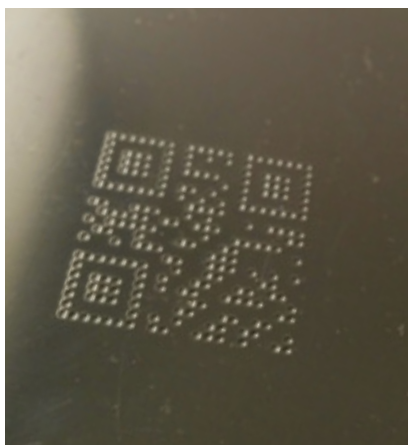
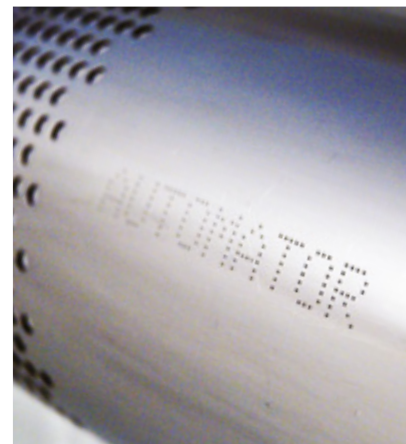
www.automator.com

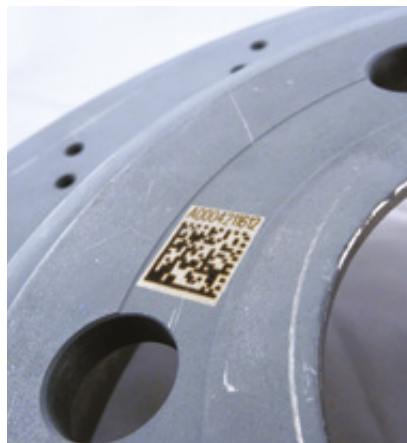
GENERAL CATALOGUE



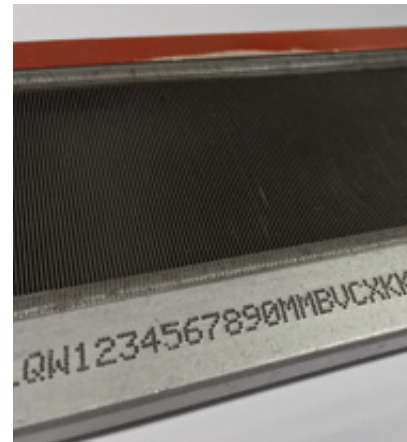
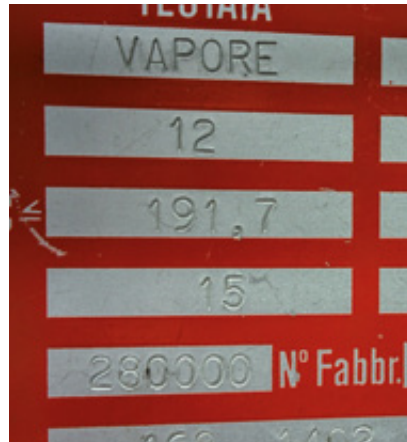
Your Global Marking Partner since 1940













WHY CHOOSE AUTOMATOR?

Since its founding in 1940, AUTOMATOR has been focused exclusively on Industrial Marking Products and Solutions making us the largest manufacturer of marking equipment in the world.

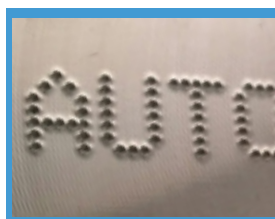
No matter how you want to permanently Identify your product, AUTOMATOR has a solution that will exceed your expectation making a mark that will enhance your part and limit your liabilities.

Our GLOBAL network of partners (not just distributors!) are available in 102 countries serving 100+ business sectors. No matter where you are in this world, we are there to support you and our marking products, birth to death.

We are your global marking partner since 1940!



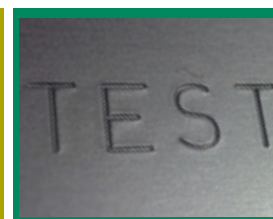
LASER



DOT PEEN



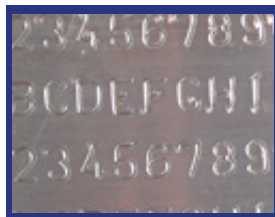
ROLL STAMPING



IMPACT



PRESSES



SCRIBE



ACCESSORIES



CHEM-ETCH



LASER

- aWave™ laser marking products
- Get results comparable to much more expensive units
- A wide variety of materials, such as Plastics, Metals, Anodized, Ceramics and much more.



VIS

Power range 10 - 20 - 30- 40 W



nanoVIS

- The most versatile, easy to use and plug-and-play
- In Mark-alone™ mode, no pc is needed
- A COMPLETE SOLUTION IN A SINGLE BOX, NO SEPARATE CONTROLLER!



GreenVIS

Power range 3 - 5 - 10 W

Ask us how to SAVE US\$6300 with the VIS!

aWave™



LASER

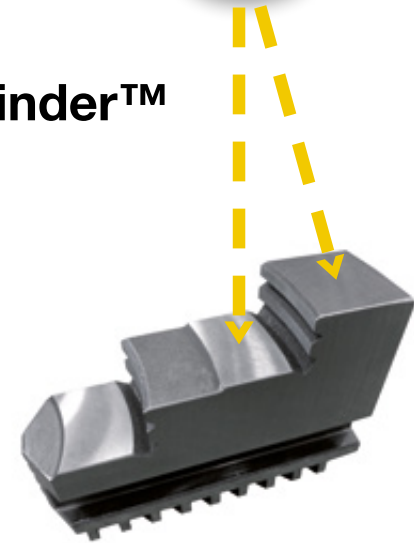
FYBRA™



- In the MarkAlone™ mode, no pc is needed
- Always the right focus with our Automatic FocusFinder™
- Get deeper marking in a variety of environments
- Power range 22 - 33 - 54W



FocusFinder™



Automatically set focal height between lens and your part

LASER

MAKE ANY AUTOMATOR LASER A CLASS 1 MARKING STATION

Automator enclosures are elegant in form and function:

Available for all Automator lasers

- Automated door and electric Z axis
- Large inspection window, large marking area, small footprint
- T-Slot base for easily mounting fixtures

Options: Rotary Axis, Programmable Z Axis and Automatic FocusFinder™
A wide range of loading area sizes

REGINA



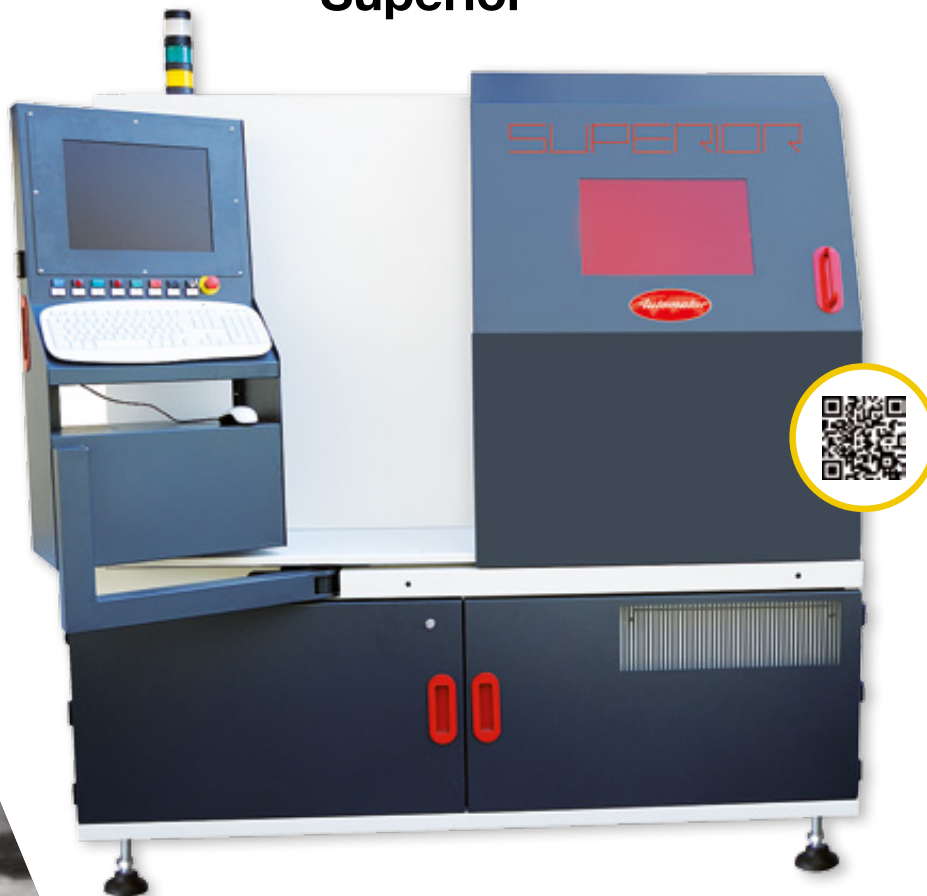
ARENA



ARENA Workstation

LASER

Superior



Laser Snorkel™

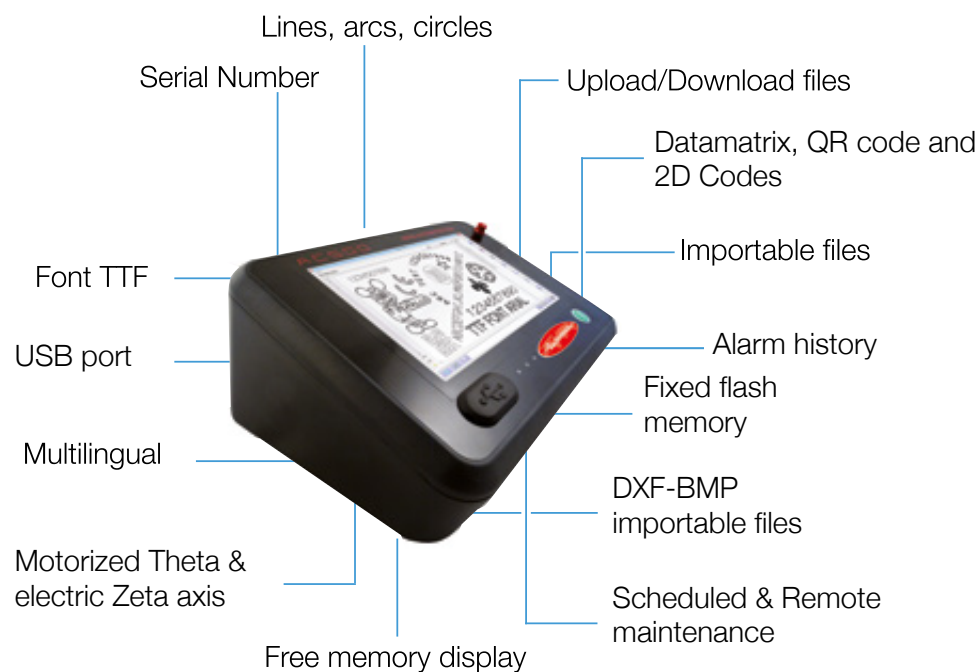


The smallest portable laser in the world

...and also customized models!

AC500

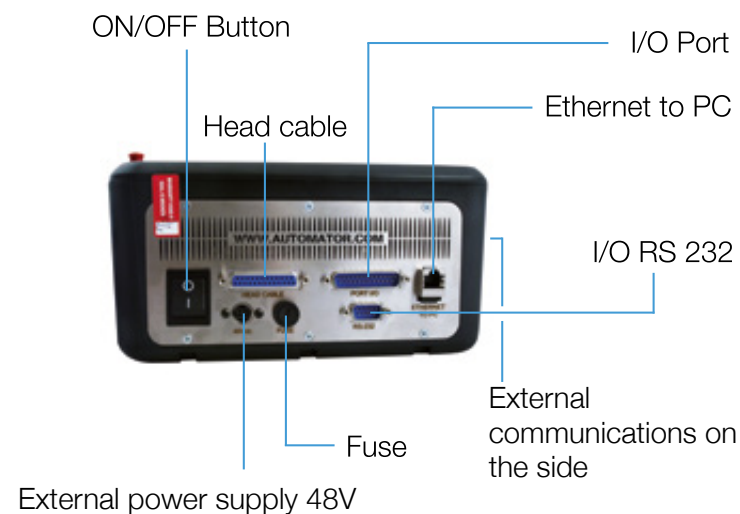
For all models



A 7" touch screen user interface makes the extensive features of the software easy to access. For the first time, marking technology has reached the ultimate in capabilities and intuitive simplicity.



NEW UNIVERSAL AND FULL OPTIONAL



External optional communications



(*) All listed brands are registered and property of thier company

AC250

For all models



UNIVERSAL AND AFFORDABLE



USB port

Power supply 48V

Fuse

RS232

Head cable



Ethernet I/O

IEC
60950-1

CSA C22.2
60950-1

The AC250 controller can operate as a slave to a local PC or you can download up to eight patterns to the controller's on-board memory and processor to operate without a PC in our proprietary MarkAlone™ method.



DOT PEEN



WATCH VIDEO NOW!



ADP120160

ADP120160DEEP

120 x 160 mm – 4.7 x 6.2 in



ADP5090

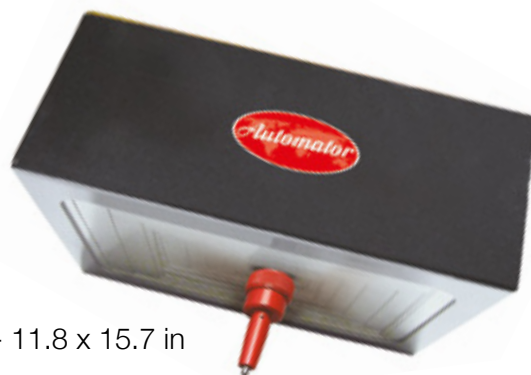
50 x 90 mm – 1.9 x 3.5 in



ADP5090P

ADP120160P

ADP300400P



ADP300400

300 x 400 mm - 11.8 x 15.7 in

Marking flexibility:
logos, drawings, serial numbers, text, arc text, marking preview and
much more then that.



DOT PEEN

ADP Convertible Kit

Use Automator dot peen marker easily in both toolstand and portable mode

ADP25120P
25 x 120 mm

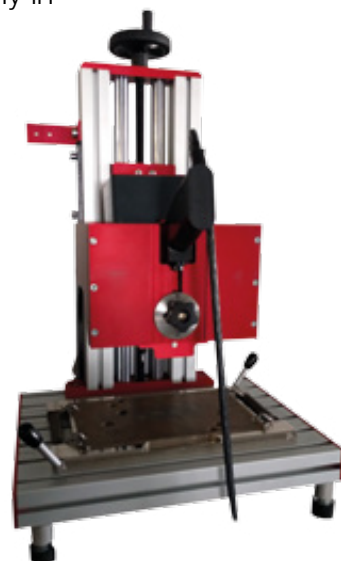
Portable



Portable

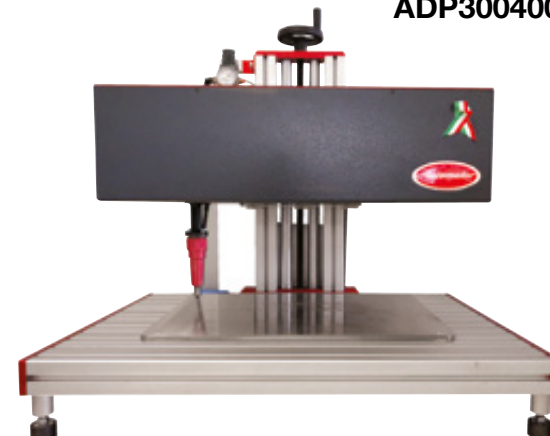


ADP2560P
25 x 60 mm



ADP5090
Toolstand mode

ADP300400





SCRIBE



ASM40150

40 x 150 mm – 1.5 x 5.9 in

WATCH VIDEO NOW!



ASM6090

60 x 90 mm - 0.9 x 3.5 in



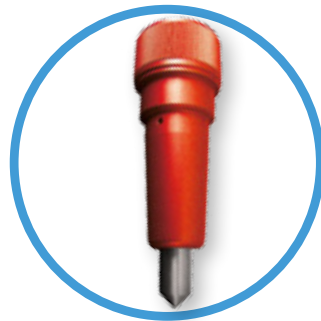
New small, compact and silent scribe machine
The best balance quality/price!

DOT PEEN

Pins



3 - 6 mm dot



12 mm dot



18 mm dot



3 - 6 mm XL dot



4 mm vibro



3 mm vibro



16 mm scribe



3 mm electric



ROLL STAMPING

MB71 UE

Electric unit for integration.

A wide choice of models to mark on the circumferences, without crash, logos, signs and numbers.



MB41



MB71 E

Manual, electric and electro-pneumatic versions for marking medium diameters up to 110 mm.



ROLL STAMPING

Continuous marking on Hexagonal Bars.
A wide choice of models to mark on circumferences
with 100 % uptime, ease of use for marking logos or
numbers



MB76 EP 90°

MB71 CE



Marking diameters up to 600 mm.
Models available in electric and electric-pneumatic versions.

...the best solution for round!

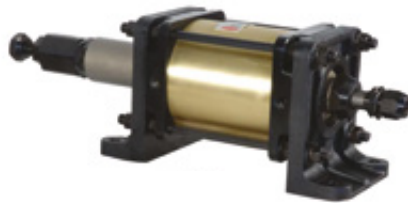
MB76 EP





IMPACT

MB35VP



MB21VP

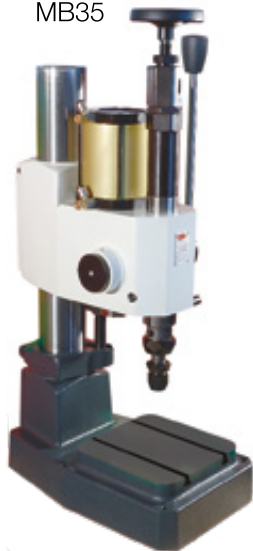


MB19VPN



Pneumatic impact units with power up to 7500 Kg, ideal for integration.

MB35



MB21



MB19



Pneumatic impact bench marking machines, with power up to 7500 Kg.

MB15



MB20



MB32



Manual impact marking bench machines, with power up to 6500 Kg.



PRESSES

MB32S

MB20S

MB15S



MANUAL

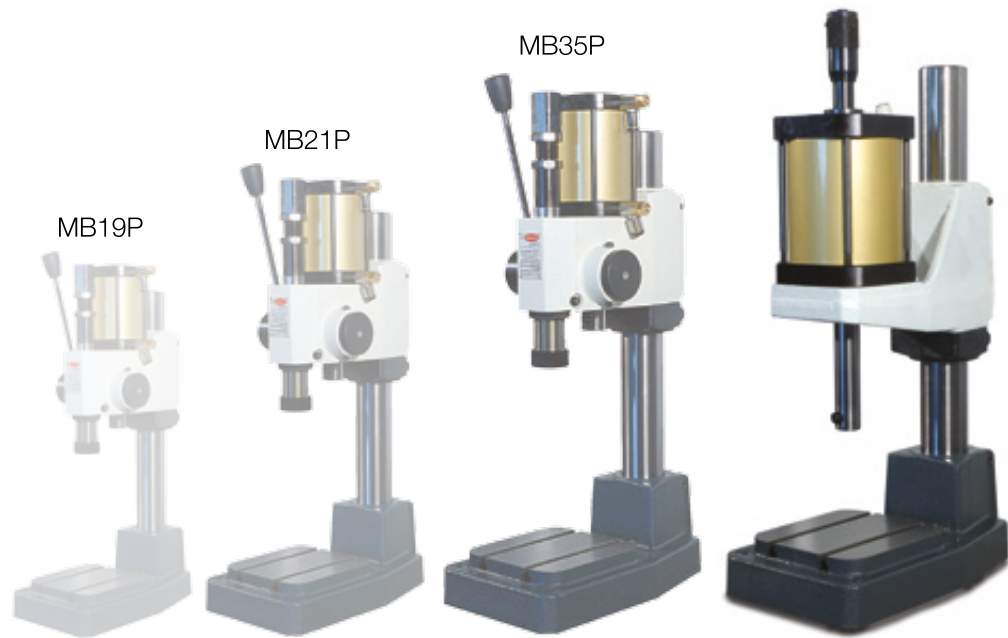
Manual and pneumatic presses for pressing, rivetting, bending or stacking.

MB19P

MB21P

MB35P

MB125P



PNEUMATIC

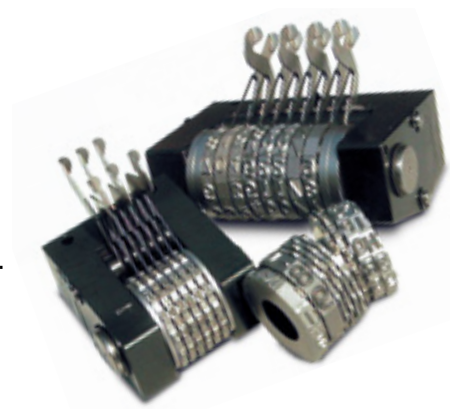
Easy marking in ONE MOTION!

ACCESSORIES



MB5

Numbering head for manual applications.



MB14

Special dies and logos.



PC

Typeholders with 1, 2, 3 lines
for Automator types.
Manual and automatic numbering
heads in different heights and wheels number.



High quality steel types,
in different heights, available as
single units or in boxes.

TRACEABILITY



QR code



Data matrix



Barcode

MARK, READ, TRACK



Automator is cetificated CISQ, the consirtium for IT Software Quality



Automator Group believes in rational energy use as input in the design of its marking systems



Automator Group believes in rational energy use as input in the design of its marking systems



Automator Group believes that all its machinery must be designed and produced according to the concept of “green philosophy”



Automator is certificated ISO 9001 IQ Net

THE BIGGEST MARKING FAMILY IN THE WORLD


Automator America Inc - Chillicothe, Ohio, USA
 (740) 983 0157
 info.us@automator.com - automator.com/am


Automator Iberomark SI - La Garriga, Spain
 (+34) 938 717 095
 ventas@automator.com - automator.com/es


 翺慕 **Automator Trading (Shanghai) co. Ltd** - Shanghai, P.R. China
 (+86) 158 0174 3707
 info.cn@automator.com - automator.com/cn


Automator India - Faridabad, India
 (+91) 129 414 2297
 info.in@automator.com - automator.com/in


OOO Automator - Moscow, Russian Federation
 (+7) 495 921 03 09
 mail.ru@automator.com - automator.com/ru


Automator Turkey - Istanbul, Turkey
 info.tr@automator.com - automator.com/tr


Automator Thailand - 117/51-52 Moo 18, Klongnueng, Klonglung Pathumthani 12120 Thailand
 Jantima Channara -Kae- (+662) 529 5641-2


Automator Mexico - Santa María Insurgentes, México
 (+55) 6726 3343
 info.mx@automator.com - automator.com/es


Traçamatrix - Graveson, France
 (+33) 490 950 897
 info@tracamatrix.com - tracamatrix.com


Stadlers Corp FZC - Al Qusais, Dubai, UAE 1F, No.7, Alley 23, Lane 85, Sec. 3, Muzha Rd., Wenshan District, 116, +971 (4) 238 2844
 fax +9714 2382855 info@stadlerscorp.com www.stadlerscorp.com


Traceability Solutions, Automator Div.
 Johannesburg, South Africa - (+27) 78 27 382
 info.za@automator.com - automator.com/za


Automator International Srl - Corsico, Italia
 (+39) 02 48 601 445
 marketing@automator.com - automator.com/it


Automator Asia Pacific - Nunawading Vic., Australia
 (+61) 03 9894 8916
 salesap@automator.com - automator.com/aus


Automator CEE s.r.o. - Prague, Czech Republic
 (+42) 0273132590
 info.cz@automator.com - automator.com/cz


Automator Poland - Swidnica, Poland
 (+48) 695 663 457
 info.pl@automator.com - automator.com/pl


Automator d.o.o. - Lesce, Slovenia
 (+386) 5 90 33 782
 info.si@automator.com - automator.com/si



Automator Andina S.A.S - Medellín-Antioquia, Colombia
 +57 (4) 2359012
 info.andina@automator.com - automator.com/an



OOO Automator - Poltava, Ukraine
 (+38) 0532 59 80 68
 info.ua@automator.com - automator.com/ua



Mach Ftd - Bucharest, Romania
 (+40) 214 609 840
 mach@mach.ro - mach.ro



Oy Suomen EDM Ab - Porvoo, Finland
 (+358) 19 5211400
 info.sf@automator.com - automator.com/sf



Toyo Corporation - Aichi Ken, Japan
 (+81) 566 232 030
 ity1002@toyo-tos.com - toyo-tos.co.jp



Automator Brandone - Watford, Great Britain
 (+44) 208 863 7141
 info.uk@automator.com - automator.com/uk



Automator OOD - Pazardzhik, Bulgaria
 (+359) 893 558 655
 info.bg@automator.com - automator.com/bg


Torvalla Maskinkomponenter - Handen C Sweden
 Tel. (+46) 08 52294600
 info@torvallamaskin.se



Automator s.r.o. - Stara Tura, Slovakia
 (+421) 915 708 066
 info.sk@automator.com - automator.com/sk



Automator Suisse - Stabio, Switzerland
 (+41) 091 647 15 90
 info.ch@automator.com - automator.com/ch



Automator Korea
 Gyeonggi-do, South Korea
 info.kr@automator.com - automator.com


Automator Iran - Tehran, Iran
 (+98) 212 2571258
 info.ir@automator.com


Arnold Trading Co. Ltd. - Industrial Area Holon 58810, Israel
 (+972) 355 813 13
 info@arnold.co.il - arnold.co.il


MF Flues Ind. Com. Ltda - Sao Paulo, Brazil
 (+55)-11 55 147 400
 flues@flues.com.br - flues.com/br


Smartec Gaging Instruments Co. Ltd - Wenshan District, taipei 116 Taiwan
 Tel: (+886) 2 2234 4396
 Info.th@automator.com


Novograv - Weilerbach, Germany
 (+49) 06374 4027
 info.de@automator.com - automator.com



www.automator.com