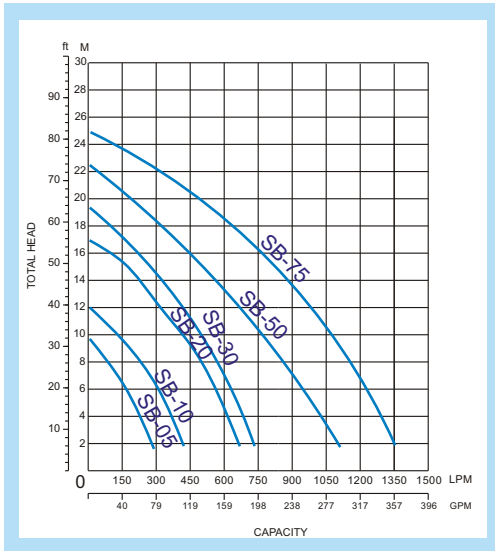


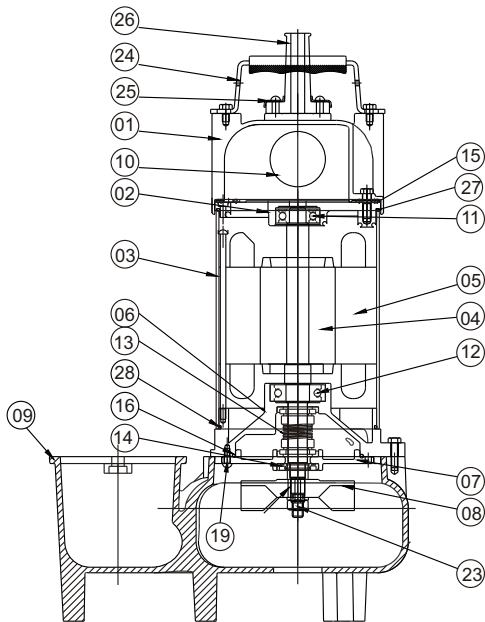
Performance



SB-SERIES



Construction



NO.	PART NAME	Material
01	Top Cover	SUS304
02	Upper Bearing Cover	SUS304
03	Motor Housing	SUS304
04	Shaft	SUS316
05	Stator	SILICON STEEL
06	Seal Plate	SUS 304
07	Me. Seal Cover	SUS304
08	Impeller	SUS304
09	Pump Casing	SUS304
10	Capacitor	
11	Ball Bearing	
12	Ball Bearing	
13	Me. Seal	SIC/SIC
14	Oil Seal	VITON
15	Upper Gasket	VITON
16	O-Ring	VITON
23	Nut	SUS304
24	Handle Cover	SUS+SILICON
25	Gland Cover	SUS 304
26	Cable Gland	VITON
27	O-Ring	VITON
28	O-Ring	VITON

Specifications

Model	Output		Discharge		Rated		Maximum		Dimension	Weight
	(Hp)	(KW)	(Mm)	(Inch)	Head(M)	Flow(LPM)	Head(M)	Flow(LPM)	L x W x H (mm)	Kg
SB-05	1/2	0.4	50	2"	6	150	9	300	223x132x395	14
SB-10	1	0.75	50	2"	9	200	12	420	223x132x425	21
SB-20	2	1.5	80	3"	12	300	17	620	390x210x530	32.2
SB-30	3	2.2	80	3"	14	320	20	750	392x210x550	34.5
SB-50	5	3.7	80(100)	3"(4")	15	480	23	1100	525x250x635	45
SB-75	7.5	5.5	100	4"	18	600	25	1350	525x250x675	54



HUNG PUMP WATER PUMP GROUP

8F, No. 251, San Ming Road,
 Lu Chou City Taipei Hsien, Taiwan
 TEL: (886)-2-2847-2419
 FAX: (886)-2-2847-1559
 E-Mail: hungpump@ms9.hinet.net